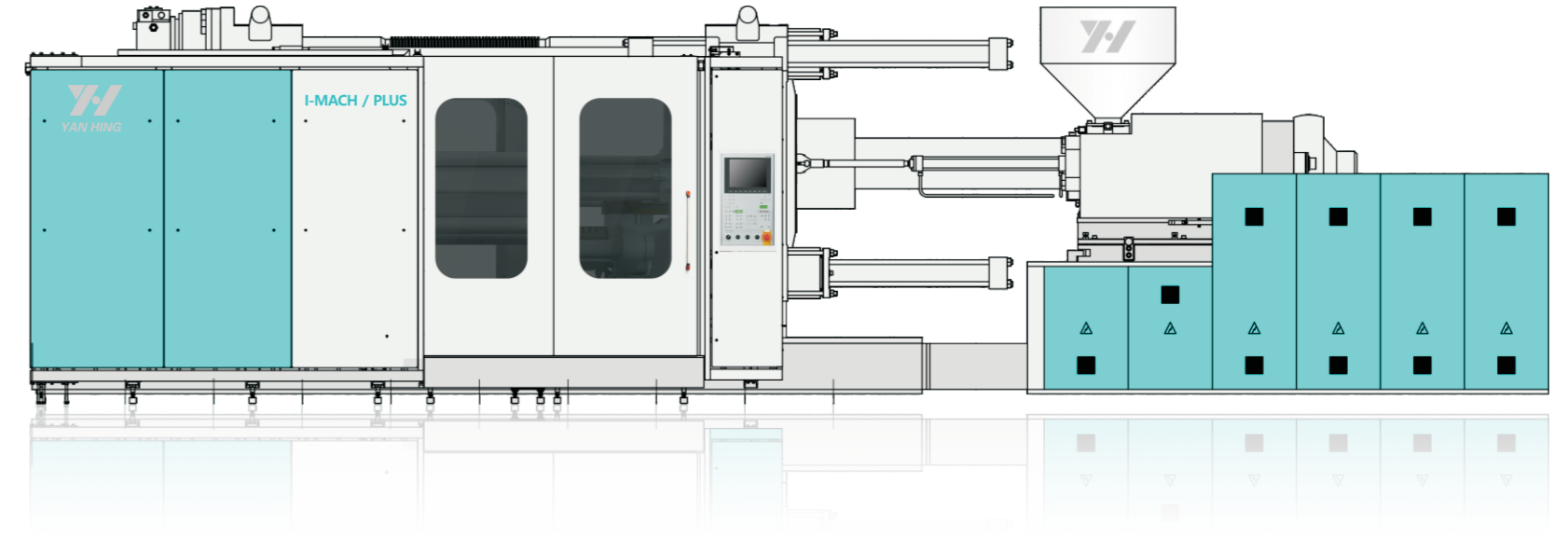


YH20190515.1

I-MACH / PLUS



仁興機器廠有限公司 (香港總部)

地址: 香港九龍觀塘開源道62號駝漆大廈第2座5字樓A&B室
電話: 852-2389 1338 傳真: 852-2797 8661
郵箱: info@yanhing.com

仁興機械(佛山)有限公司 (佛山高明工廠)

地址: 廣東省佛山市高明區楊和鎮高明大道中人景路13號
電話: 0757-8880 3372 傳真: 0757-8880 3329

www.yanhing.com

www.prowin.com.hk

Yan Hing Engineering Works Ltd.

Add: Flat A & B, 5/F., Block 2, Camelpaint Buildings,
62 Hoi Yuen Road, Kwun Tong, Kowloon, Hong Kong.
Tel: 852-23891338 Fax: 852-27978661
E-mail: info@yanhing.com

Yan Hing Machinery(Foshan)Co., Ltd.

Add: 13 Renjing Rd., Yanghe Town, Gaoming District,
Foshan City, P.R. China.
Tel: 0757-8880 3372 Fax: 0757-8880 3329



官方微信公众号

兩板式注塑成型機系列

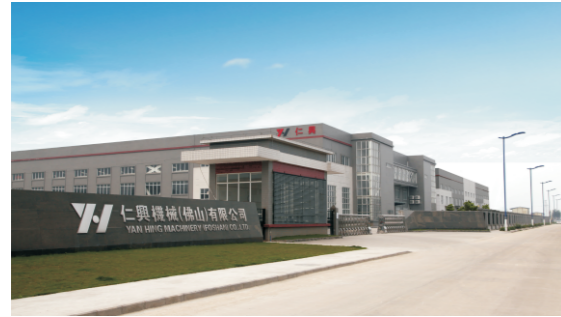
TWO PLATEN HYDRAULIC PLASTIC
INJECTION MOULDING MACHINE SERIES

Clamping Force 450-3300T



Introduction

公司簡介



仁興集團二十世紀五十年代成立於香港，致力研製注塑成型機，是香港該行始創者之一。創業至今都以質量及信譽奉為經營之道，六十多年來所研製的各系列注塑成型機均以質量優越而享譽國際。九十年代初，仁興集團在中國深圳市成立仁興機械（深圳）有限公司，自資興建廠房及購置進口生產設備，更獲ISO9001質量保證證書。近年又積極研製AM系列冷、熱室金屬壓鑄機。仁興集團另一個成員威信機械有限公司，致力研製PW系列冷、熱室金屬壓鑄機。該系列凝聚了精密和高速於一身，得到國內外買家愛戴。2014年，仁興集團在中國佛山市建造超級工業園，除加強研製注塑成型機及金屬壓鑄機外，更計劃製造其它精密機械。

經過半個世紀之穩步發展，仁興集團已建造了多個重型設備的制造基地，除具備各種精密加工機械及工藝外，亦擁有一團優秀的機械設計及制造和管理人才，成為最具競爭優勢之機械制造商；又憑着完善和豐富的企業管理經驗，在注塑機成型機制造行業成績卓越外，集團再積極投放發展金屬壓鑄機械，亦取得了重大的成果，獲客戶一致好評。

Yan Hing Group was established in Hong Kong since 1950's. Going through more than 60 years of development, our subsidiary company includes Yan Hing Engineering Works Ltd, Yan Hing Machinery (Shen Zhen) Co. Ltd, Yan Hing Machinery (Fo Shan) Co. Ltd, Glory Machinery Ltd. Our core business has been to produce and improve plastic injection moulding machines. By putting top priority on high quality and continuous improvement, Yan Hing's high quality products have since gained worldwide reputation.

In 1991, Yan Hing Machinery (Shenzhen) Co. Ltd. was set up as a branch factory in Shenzhen, China. With a purpose-built and well-designed industrial complex, the factory possesses a wide range of advanced facilities for manufacturing. Having been accredited with ISO9001 as proof of our achievement, we endeavor to build a heavy industrial base and recruit a team of best skilled and dedicated employees. As a result, we succeed in maintaining a competitive position in the marketplace. Under an innovative and dynamic management, we have demonstrated remarkable successes in introducing the new product of die-casting machine into our business as well as securing enduring relationship with our esteemed customers. In recent years, we are also actively developing AM series hot/cold chamber die casting machines.

The other member of the Yan Hing Group, Glory Machinery Limited, has successfully developed PW series hot/cold chamber die casting machines. Machineries in this series have attracted worldwide attention for its accurate and high speed functions. In 2003, we successfully developed the first magnesium alloy hot/cold chamber die casting machine in the country.

Yan Hing Group is now building a new headquarter in the Fo Shan China. Our aim for this is not only to strengthen our development in injection molding and die casting machines but also planning to diversify our product to other type of machineries.

During the 60 years, Yan Hing Group has grown into a corporate consisting of heavy CNC centres, strong production team, talented machinery designers and excellent management team.



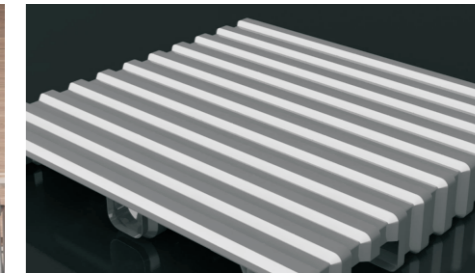
汽車配件 / Motor Vehicle Parts



深腔制品 / Deep Cavity Products



家電制品 / Household Appliances



物流建材 / Construction Parts

射臺 / Injection Unit 機型 / Model	2001	2760	4272	5888	8312	11545	17200	24560	32656	43632	59874
IM 450 PLUS	●	●	●								
IM 550 PLUS		●	●	●							
IM 650 PLUS			●	●	●						
IM 800 PLUS				●	●	●					
IM 1000 PLUS				●	●	●					
IM 1300 PLUS					●	●	●				
IM 1600 PLUS						●	●	●			
IM 2000 PLUS							●	●	●		
IM 2400 PLUS							●	●	●		
IM 2800 PLUS								●	●	●	
IM 3300 PLUS									●	●	●

● 可配射台 Choice of Injection Unit

計算射膠重量因子k值表 Calculation of Shot Weight Factor k Chart

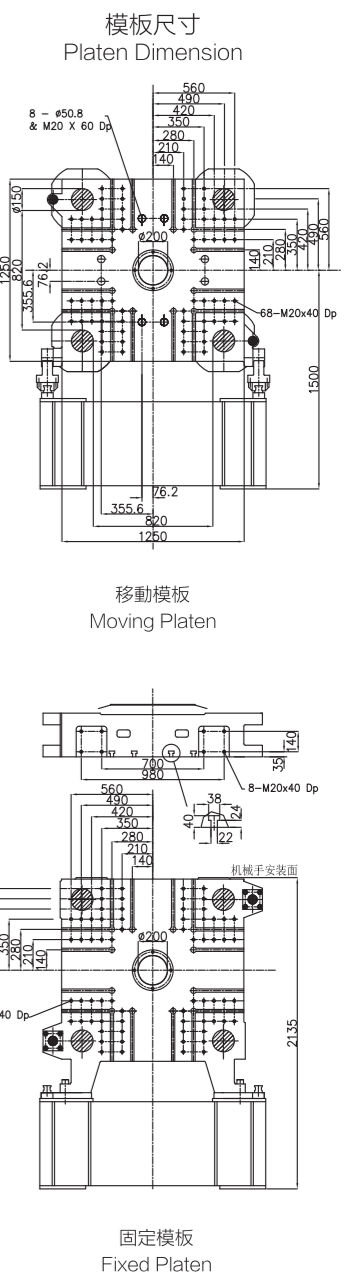
材料 / Material	因子 k / Factor k	材料 / Material	因子 k / Factor k
ABS	0.88	PP+20%GF	0.85
CA	1.02	PP+20%Talcun	0.85
CAB	0.97	PP+40%Talcun	0.98
PA	0.91	PS	0.91
PC	0.97	PVC-flexible	1.02
PE	0.71	PVC-rigid	1.12
PMMA	0.94	SAN	0.88
POM	1.15	SB	0.88
PP	0.73		

● 备注：最大射膠重量(g)=理論射膠體積(cm³)×因子k / Max Shot Weight (g) = Theoretical Shot Volume (cm³) x Factor k

IM 450 PLUS

項目	Items	單位/Unit	IM 450 PLUS									
			2001			2760			4272			
INJECTION UNIT	射臺型號	Injection Unit	2001			2760			4272			
	螺絲編號	Screw Type	A	B	C	A	B	C	A	B	C	
	螺絲直徑	Screw Diameter	mm	60	65	75	65	75	85	75	85	95
	螺絲長徑比	Screw L:D Ratio	L:D	22.0								
	注射壓力	Injection Pressure	kg/cm²	2117	1855	1393	2218	1665	1297	2275	1771	1418
	注射重量 (PS)	Shot Weight (PS)	g	845	992	1320	1144	1524	1957	1727	2218	2771
			oz	30	35	47	40	54	69	61	78	98
	最高注射率	Injection Rate	cc / sec	417	490	652	410	551	701	512	658	822
	理論注射容積	Shot Volume	cc	918	1078	1435	1244	1656	2127	1877	2411	3012
	注射行程	Screw Stroke	mm	325			375			425		
	螺絲轉速	Screw Speed	r.p.m	0-296			0-268			0-209		
	射咀接觸力	Nozzle Contact Force	kN	108								
CLAMPING UNIT	鎖模系統類別	Clamping Type	液壓鎖模/抱閘 Two Platen Hydraulic Clamp									
	鎖模力	Clamping Force	Tons	450								
	鎖模行程	Opening Stroke	mm	1250								
	模板最大開距	Max Daylight Opening	mm	1600								
	容模厚度(小機：最小模厚)	Mould Height (Min-Max)	mm	350-850								
	四柱內距(水平×垂直)	Space Between Tie-bars	mm	820x820								
	模板尺寸(水平×垂直)	Platen Dimension (WxH)	mm	1250x1250								
	模具定位孔直徑	Mould Locator Diameter	mm	Φ200H8								
	頂針力	Ejector Force	ton	86								
	頂針行程	Ejector Stroke	mm	250								
	系統壓力	System Pressure	kg/cm²	175/210								
	OTHERS	油泵電機功率	Electric Motor Power	55			55			37+37		
電熱功率		Heating Power	kW	21	23.5	26	27	30.25	33.5	36.5	40	21
溫度控制區		Temperature Control Zones	區段	4+1	4+1	5+1	4+1	4+1	5+1	5+1	5+1	4+1
總用電量		Gross Power Consumption	kW	76	78.5	81	82	85.25	88.5	91.5	95	76
電源需求		Electricity Required	A	136	140	144	145	150	155	196	201	207
油箱容積		Oil Tank Capacity	L	1000								
機器重量		Machine Weight	Tons	19			21			24		
外形尺寸(LxWxH)		Machine Dimension (LxWxH)	mxmxm	6.60x2.34x2.10			6.93x2.34x2.30			7.67x2.34x2.41		

● 本公司可以隨時修改以上技術參數而無須預先通知 / The above specifications can be altered without prior notice

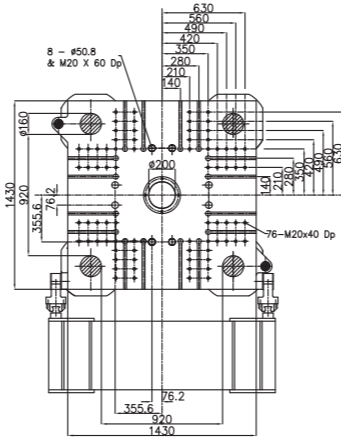


IM 550 PLUS

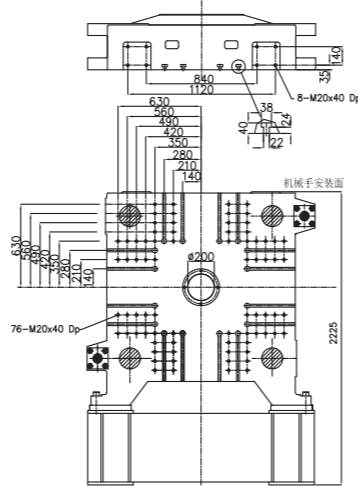
Machine Specification 機器參數

項目	Items	單位/Unit	IM 550 PLUS								
			2760			4272			5888		
射臺型號	Injection Unit		2760			4272			5888		
螺絲編號	Screw Type		A	B	C	A	B	C	A	B	C
螺絲直徑	Screw Diameter	mm	65	75	85	75	85	95	85	95	105
螺絲長徑比	Screw L:D Ratio	L:D	22.0								
注射壓力	Injection Pressure	kg/cm ²	2218	1665	1297	2275	1771	1418	2184	1749	1431
注射重量 (PS)	Shot Weight (PS)	g	1144	1524	1957	1727	2218	2771	2479	3097	3783
		oz	40	54	69	61	78	98	87	109	133
最高注射率	Injection Rate	cc / sec	410	551	701	512	658	822	667	833	1018
理論注射容積	Shot Volume	cc	1244	1656	2127	1877	2411	3012	2695	3366	4113
注射行程	Screw Stroke	mm	375			425			475		
螺絲轉速	Screw Speed	r.p.m	0-268			0-209			0-186		
射咀接觸力	Nozzle Contact Force	kN	108								
鎖模系統類別	Clamping Type		液壓鎖模/抱閘 Two Platen Hydraulic Clamp								
鎖模力	Clamping Force	Tons	550								
鎖模行程	Opening Stroke	mm	1350								
模板最大開距	Max Daylight Opening	mm	1750								
容模厚度(小機: 最小模厚)	Mould Height (Min-Max)	mm	400-900								
四柱內距(水平x垂直)	Space Between Tie-bars	mm	920x920								
模板尺寸(水平x垂直)	Platen Dimension (WxH)	mm	1430x1430								
模具定位孔直徑	Mould Locator Diameter	mm	Φ200H8								
頂針力	Ejector Force	ton	86								
頂針行程	Ejector Stroke	mm	250								
系統壓力	System Pressure	kg/cm ²	175/210								
油泵電機功率	Electric Motor Power	kW	37+37			37+37			45+45		
電熱功率	Heating Power	kW	27	30.25	33.5	36.5	40	43.5	41	45	49
溫度控制區	Temperature Control Zones	區段	4+1	4+1	5+1	5+1	5+1	6+1	5+1	5+1	6+1
總用電量	Gross Power Consumption	kW	101	104.3	107.5	110.5	114	117.5	115	119	123
電源需求	Electricity Required	A	182	187	191	196	201	207	233	239	245
油箱容積	Oil Tank Capacity	L	1250								
機器重量	Machine Weight	Tons	22			24			26		
外形尺寸(LxWxH)	Machine Dimension (LxWxH)	mxmxm	7.18x2.48x2.35			7.92x2.48x2.46			8.56x2.48x2.60		

模板尺寸
Platen Dimension



移動模板
Moving Platen



固定模板
Fixed Platen

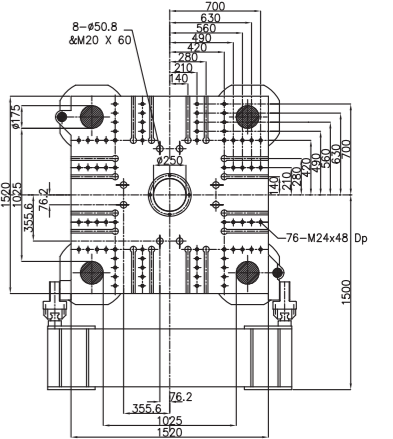
• 本公司可以隨時修改以上技術參數而無須預先通知 / The above specifications can be altered without prior notice

IM 650 PLUS

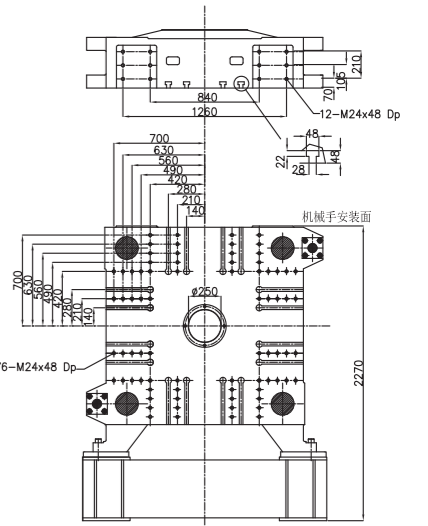
Machine Specification 機器參數

項目	Items	單位/Unit	IM 650 PLUS								
			4272			5888			8312		
射臺型號	Injection Unit		4272			5888			8312		
螺絲編號	Screw Type		A	B	C	A	B	C	A	B	C
螺絲直徑	Screw Diameter	mm	75	85	95	85	95	105	95	105	120
螺絲長徑比	Screw L:D Ratio	L:D	22.0								
注射壓力	Injection Pressure	kg/cm ²	2275	1771	1418	2184	1749	1431	2233	1828	1400
注射重量 (PS)	Shot Weight (PS)	g	1727	2218	2771	2479	3097	3783	3423	4182	5462
		oz	61	78	98	87	109	133	121	148	193
最高注射率	Injection Rate	cc / sec	512	658	822	667	833	1018	814	995	1300
理論注射容積	Shot Volume	cc	1877	2411	3012	2695	3366	4113	3721	4545	5937
注射行程	Screw Stroke	mm	425			475			525		
螺絲轉速	Screw Speed	r.p.m	0-209			0-186			0-142		
射咀接觸力	Nozzle Contact Force	kN	108			108			202		
鎖模系統類別	Clamping Type		液壓鎖模/抱閘 Two Platen Hydraulic Clamp								
鎖模力	Clamping Force	Tons	650								
鎖模行程	Opening Stroke	mm	1450								
模板最大開距	Max Daylight Opening	mm	1900								
容模厚度(小機: 最小模厚)	Mould Height (Min-Max)	mm	450-1000								
四柱內距(水平x垂直)	Space Between Tie-bars	mm	1025x1025								
模板尺寸(水平x垂直)	Platen Dimension (WxH)	mm	1520x1520								
模具定位孔直徑	Mould Locator Diameter	mm	Φ250H8								
頂針力	Ejector Force	ton	86								
頂針行程	Ejector Stroke	mm	250								
系統壓力	System Pressure	kg/cm ²	175/210								
油泵電機功率	Electric Motor Power	kW	37+37			45+45			55+55		
電熱功率	Heating Power	kW	36.5	40	43.5	41	45	49	49.25	57.25	65.25
溫度控制區	Temperature Control Zones	區段	5+1	5+1	6+1	5+1	5+1	6+1	6+1	7+1	8+1
總用電量	Gross Power Consumption	kW	110.5	114	117.5	115	119	123	123.3	131.3	139.3
電源需求	Electricity Required	A	196	201	207	233	239	245	284	296	308
油箱容積	Oil Tank Capacity	L	1560								
機器重量	Machine Weight	Tons	39			32			36		
外形尺寸(LxWxH)	Machine Dimension (LxWxH)	mxmxm	8.17x2.66x2.41			8.81x2.66x2.55			9.52x2.66x2.55		

模板尺寸
Platen Dimension



移動模板
Moving Platen



固定模板
Fixed Platen

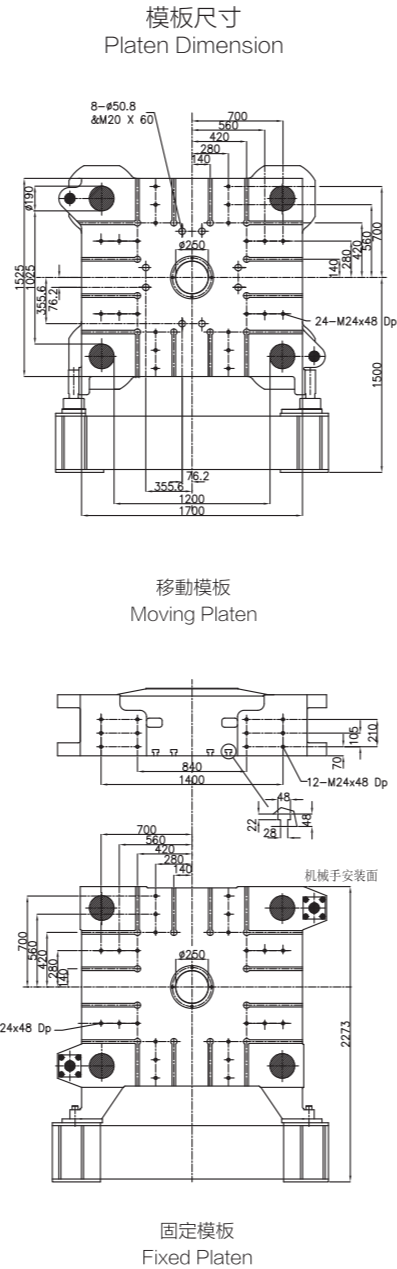
• 本公司可以隨時修改以上技術參數而無須預先通知 / The above specifications can be altered without prior notice

IM 800 PLUS

Machine Specification 機器參數

項目	Items	單位/Unit	IM 800 PLUS								
			5888			8312			11545		
射臺型號	Injection Unit										
螺絲編號	Screw Type		A	B	C	A	B	C	A	B	C
螺絲直徑	Screw Diameter	mm	85	95	105	95	105	120	105	120	135
螺絲長徑比	Screw L:D Ratio	L:D	22.0								
注射壓力	Injection Pressure	kg/cm ²	2184	1749	1431	2233	1828	1400	2222	1701	1344
注射重量 (PS)	Shot Weight (PS)	g	2479	3097	3783	3423	4182	5462	4779	6242	7901
		oz	87	109	133	121	148	193	169	220	279
最高注射率	Injection Rate	cc / sec	667	833	1018	814	995	1300	984	1285	1627
理論注射容積	Shot Volume	cc	2695	3366	4113	3721	4545	5937	5195	6785	8588
注射行程	Screw Stroke	mm	475			525			600		
螺絲轉速	Screw Speed	r.p.m	0-186			0-142			0-130		
射咀接觸力	Nozzle Contact Force	kN	108			202			202		
鎖模系統類別	Clamping Type		液壓鎖模/抱閘 Two Platen Hydraulic Clamp								
鎖模力	Clamping Force	Tons	800								
鎖模行程	Opening Stroke	mm	1600								
模板最大開距	Max Daylight Opening	mm	2100								
容模厚度(小機: 最小模厚)	Mould Height (Min-Max)	mm	500-1100								
四柱內距(水平x垂直)	Space Between Tie-bars	mm	1200x1025								
模板尺寸(水平x垂直)	Platen Dimension (WxH)	mm	1700x1525								
模具定位孔直徑	Mould Locator Diameter	mm	Φ250H8								
頂針力	Ejector Force	ton	21								
頂針行程	Ejector Stroke	mm	350								
系統壓力	System Pressure	kg/cm ²	175/280								
油泵電機功率	Electric Motor Power	kW	45+45			55+55			45+45		
電熱功率	Heating Power	kW	41	45	49	49.25	57.25	65.25	61	71	81
溫度控制區	Temperature Control Zones	區段	5+1	5+1	6+1	6+1	7+1	8+1	6+1	7+1	8+1
總用電量	Gross Power Consumption	kW	115	119	123	123.3	131.3	139.3	196	206	216
電源需求	Electricity Required	A	233	239	245	284	298	308	349	364	379
油箱容積	Oil Tank Capacity	L	2250								
機器重量	Machine Weight	Tons	39			43			47		
外形尺寸(LxWxH)	Machine Dimension (LxWxH)	mxmxm	8.17x2.66x2.41			8.81x2.66x2.55			9.52x2.66x2.55		

• 本公司可以隨時修改以上技術參數而無須預先通知 / The above specifications can be altered without prior notice

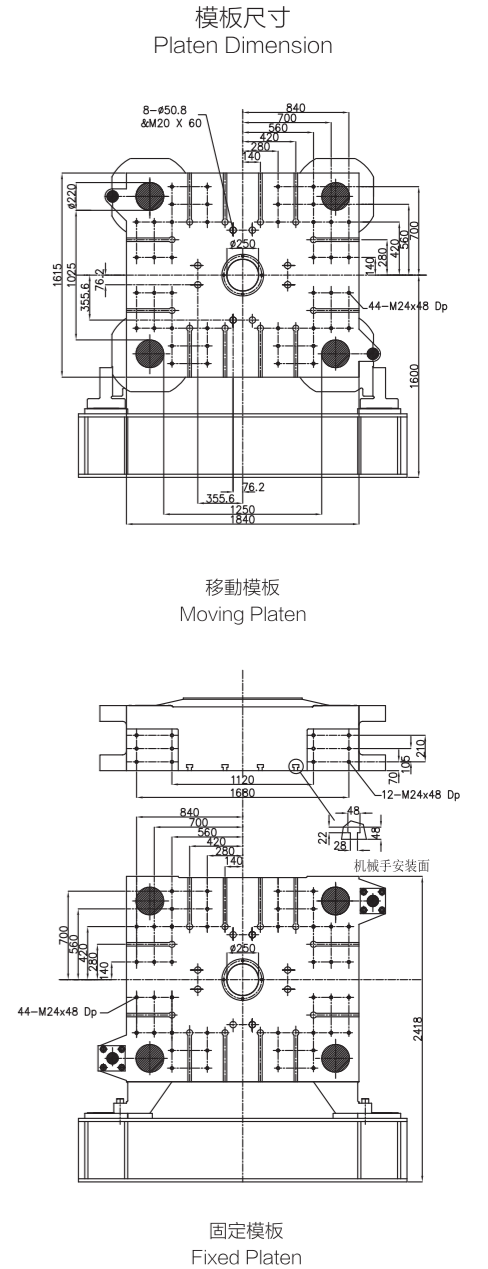


IM 1000 PLUS

Machine Specification 機器參數

項目	Items	單位/Unit	IM 1000 PLUS								
			5888			8312			11545		
射臺型號	Injection Unit										
螺絲編號	Screw Type		A	B	C	A	B	C	A	B	C
螺絲直徑	Screw Diameter	mm	85	95	105	95	105	120	105	120	135
螺絲長徑比	Screw L:D Ratio	L:D	22.0								
注射壓力	Injection Pressure	kg/cm ²	2184	1749	1431	2233	1828	1400	2222	1701	1344
注射重量 (PS)	Shot Weight (PS)	g	2479	3097	3783	3423	4182	5462	4779	6242	7901
		oz	87	109	133	121	148	193	169	220	279
最高注射率	Injection Rate	cc / sec	667	833	1018	814	995	1300	984	1285	1627
理論注射容積	Shot Volume	cc	2695	3366	4113	3721	4545	5937	5195	6785	8588
注射行程	Screw Stroke	mm	475			525			600		
螺絲轉速	Screw Speed	r.p.m	0-186			0-142			0-130		
射咀接觸力	Nozzle Contact Force	kN	108			202			202		
鎖模系統類別	Clamping Type		液壓鎖模/抱閘 Two Platen Hydraulic Clamp								
鎖模力	Clamping Force	Tons	1000								
鎖模行程	Opening Stroke	mm	1800								
模板最大開距	Max Daylight Opening	mm	2300								
容模厚度(小機: 最小模厚)	Mould Height (Min-Max)	mm	500-1100								
四柱內距(水平x垂直)	Space Between Tie-bars	mm	1250x1025								
模板尺寸(水平x垂直)	Platen Dimension (WxH)	mm	1840x1615								
模具定位孔直徑	Mould Locator Diameter	mm	Φ250H8								
頂針力	Ejector Force	ton	21								
頂針行程	Ejector Stroke	mm	350								
系統壓力	System Pressure	kg/cm ²	175/280								
油泵電機功率	Electric Motor Power	kW	45+45			55+55			45+45+45		
電熱功率	Heating Power	kW	41	45	49	49.25	57.25	65.25	61	71	81
溫度控制區	Temperature Control Zones	區段	5+1	5+1	6+1	6+1	7+1	8+1	6+1	7+1	8+1
總用電量	Gross Power Consumption	kW	115	119	123	123.3	131.3	139.3	196	206	216
電源需求	Electricity Required	A	233	239	245	284	298	308	349	364	379
油箱容積	Oil Tank Capacity	L	2250								
機器重量	Machine Weight	Tons	45			47			51		
外形尺寸(LxWxH)	Machine Dimension (LxWxH)	mxmxm	9.56x3.43x2.65			10.32x3.43x2.65			10.94x3.43x2.64		

• 本公司可以隨時修改以上技術參數而無須預先通知 / The above specifications can be altered without prior notice



IM 1300 PLUS

Machine Specification 機器參數

項目	Items	單位/Unit	IM 1300 PLUS								
			8312			11545			17200		
射臺型號	Injection Unit		8312			11545			17200		
螺絲編號	Screw Type		A	B	C	A	B	C	A	B	C
螺絲直徑	Screw Diameter	mm	95	105	120	105	120	135	120	135	150
螺絲長徑比	Screw L:D Ratio	L:D	22.0								
注射壓力	Injection Pressure	kg/cm ²	2233	1828	1400	2222	1701	1344	2255	1782	1443
注射重量 (PS)	Shot Weight (PS)	g	3423	4182	5462	4779	6242	7901	7023	8888	10973
		oz	121	148	193	169	220	279	248	314	387
最高注射率	Injection Rate	cc / sec	814	995	1300	984	1285	1627	1210	1531	1891
理論注射容積	Shot Volume	cc	3721	4545	5937	5195	6785	8588	7634	9661	11928
注射行程	Screw Stroke	mm	525			600			675		
螺絲轉速	Screw Speed	r.p.m	0-142			0-130			0-120		
射咀接觸力	Nozzle Contact Force	kN	202								
鎖模系統類別	Clamping Type		液壓鎖模/抱閘 Two Platen Hydraulic Clamp								
鎖模力	Clamping Force	Tons	1300								
鎖模行程	Opening Stroke	mm	2200								
模板最大開距	Max Daylight Opening	mm	2900								
容模厚度(小機: 最小模厚)	Mould Height (Min-Max)	mm	700-1500								
四柱內距(水平x垂直)	Space Between Tie-bars	mm	1400x1300								
模板尺寸(水平x垂直)	Platen Dimension (WxH)	mm	1950x1850								
模具定位孔直徑	Mould Locator Diameter	mm	Φ200H8								
頂針力	Ejector Force	ton	32.3								
頂針行程	Ejector Stroke	mm	350								
系統壓力	System Pressure	kg/cm ²	175/280								
油泵電機功率	Electric Motor Power	kW	55+55			45+45+45			55+55+55		
電熱功率	Heating Power	kW	49.25	57.25	65.25	61	71	81	81	94	107
溫度控制區	Temperature Control Zones	區段	6+1	7+1	8+1	6+1	7+1	8+1	6+1	7+1	8+1
總用電量	Gross Power Consumption	kW	123.3	131.3	139.3	196	206	216	246	259	272
電源需求	Electricity Required	A	284	296	308	349	364	379	436	456	476
油箱容積	Oil Tank Capacity	L	2340								
機器重量	Machine Weight	Tons	56			61			66		
外形尺寸(LxWxH)	Machine Dimension (LxWxH)	m x m x m	11.08x3.61x2.80			12.70x3.61x2.80			13.31x3.61x3.11		

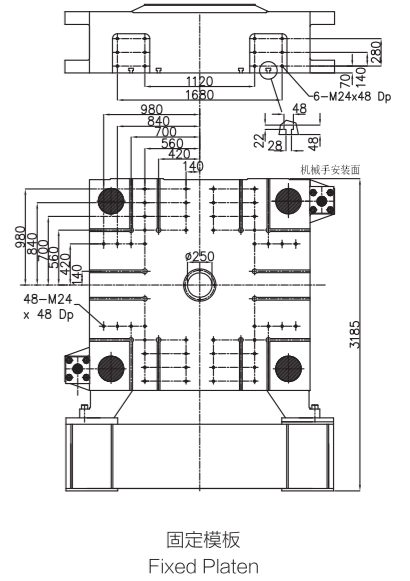
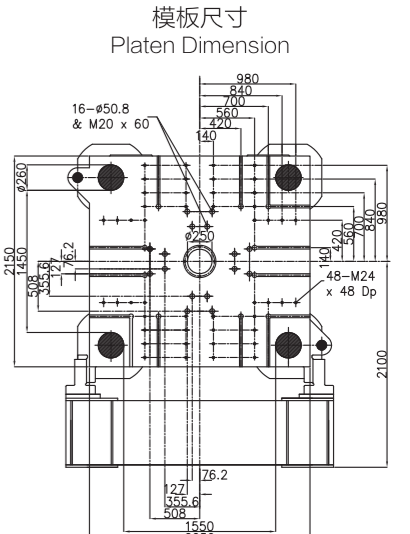
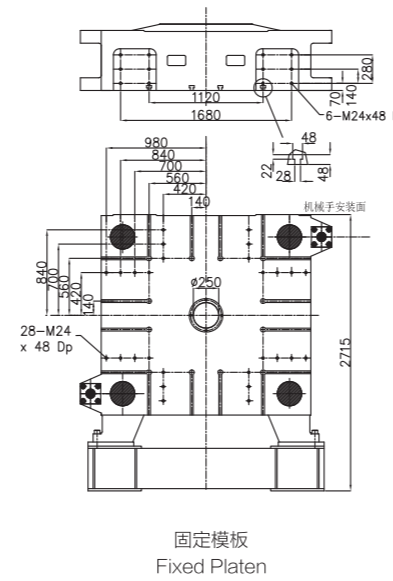
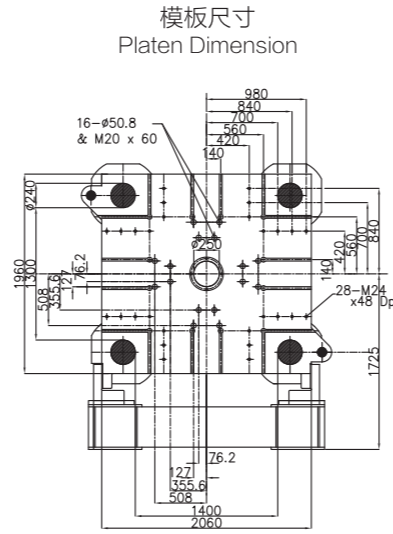
• 本公司可以隨時修改以上技術參數而無須預先通知 / The above specifications can be altered without prior notice

IM 1600 PLUS

Machine Specification 機器參數

項目	Items	單位/Unit	IM 1600 PLUS								
			11545			17200			24560		
射臺型號	Injection Unit		11545			17200			24560		
螺絲編號	Screw Type		A	B	C	A	B	C	A	B	C
螺絲直徑	Screw Diameter	mm	105	120	135	120	135	150	135	150	165
螺絲長徑比	Screw L:D Ratio	L:D	22.0								
注射壓力	Injection Pressure	kg/cm ²	2222	1701	1344	2255	1782	1443	2281	1847	1527
注射重量 (PS)	Shot Weight (PS)	g	4779	6242	7901	7023	8888	10973	9876	12193	17430
		oz	169	220	279	248	314	387	348	430	520
最高注射率	Injection Rate	cc / sec	984	1285	1627	1210	1531	1891	1598	1969	2383
理論注射容積	Shot Volume	cc	5195	6785	8588	7634	9661	11928	10735	13253	16036
注射行程	Screw Stroke	mm	600			675			750		
螺絲轉速	Screw Speed	r.p.m	0-130			0-120			0-100		
射咀接觸力	Nozzle Contact Force	kN	202								
鎖模系統類別	Clamping Type		液壓鎖模/抱閘 Two Platen Hydraulic Clamp								
鎖模力	Clamping Force	Tons	1600								
鎖模行程	Opening Stroke	mm	2660								
模板最大開距	Max Daylight Opening	mm	3300								
容模厚度(小機: 最小模厚)	Mould Height (Min-Max)	mm	700-1600								
四柱內距(水平x垂直)	Space Between Tie-bars	mm	1550x1450								
模板尺寸(水平x垂直)	Platen Dimension (WxH)	mm	2250x2150								
模具定位孔直徑	Mould Locator Diameter	mm	Φ250H8								
頂針力	Ejector Force	ton	38.9								
頂針行程	Ejector Stroke	mm	400								
系統壓力	System Pressure	kg/cm ²	175/280								
油泵電機功率	Electric Motor Power	kW	45+45+45			55+55+55			55+55+55+55		
電熱功率	Heating Power	kW	61	71	81	81	94	107	101	117	133
溫度控制區	Temperature Control Zones	區段	6+1	7+1	8+1	6+1	7+1	8+1	6+1	7+1	8+1
總用電量	Gross Power Consumption	kW	196	206	216	246	259	272	321	337	353
電源需求	Electricity Required	A	349	364	379	436	456	476	571	596	620
油箱容積	Oil Tank Capacity	L	3000								
機器重量	Machine Weight	Tons	76			83			88		
外形尺寸(LxWxH)	Machine Dimension (LxWxH)	m x m x m	12.29x3.80x3.29			12.91x3.80x3.49			13.55x3.80x3.51		

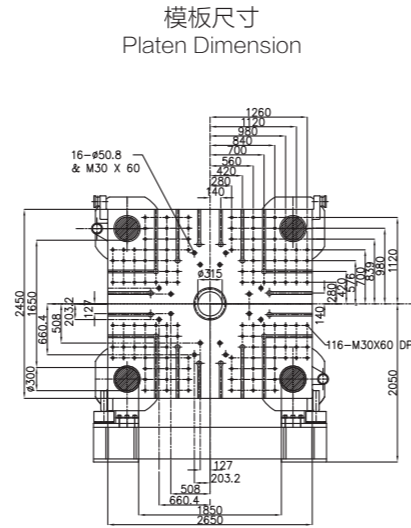
• 本公司可以隨時修改以上技術參數而無須預先通知 / The above specifications can be altered without prior notice



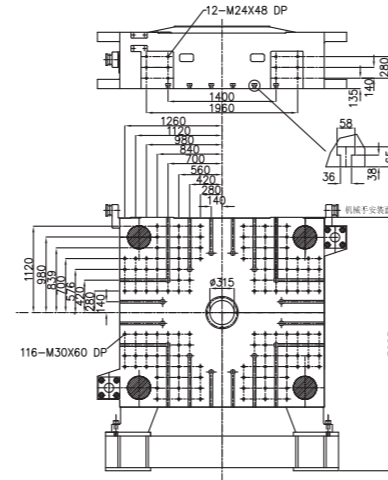
IM 2000 PLUS

Machine Specification 機器參數

項目	Items	單位/Unit	IM 2000 PLUS								
			17200			24560			32656		
射臺型號	Injection Unit		17200			24560			32656		
螺絲編號	Screw Type		A	B	C	A	B	C	A	B	C
螺絲直徑	Screw Diameter	mm	120	135	150	135	150	165	150	165	185
螺絲長徑比	Screw L:D Ratio	L:D	22.0								
注射壓力	Injection Pressure	kg/cm ²	2255	1782	1443	2281	1847	1527	2240	1851	1472
注射重量 (PS)	Shot Weight (PS)	g	7023	8888	10973	9876	12193	14755	13412	16229	20402
		oz	248	314	387	348	430	520	473	572	720
最高注射率	Injection Rate	cc / sec	1210	1531	1891	1598	1969	2383	2031	2457	3089
理論注射容積	Shot Volume	cc	7634	9661	11928	10735	13253	16036	14578	17640	22176
注射行程	Screw Stroke	mm	675			750			825		
螺絲轉速	Screw Speed	r.p.m	0-120			0-100			0-100		
射咀接觸力	Nozzle Contact Force	kN	202								
鎖模系統類別	Clamping Type		液壓鎖模/抱閘 Two Platen Hydraulic Clamp								
鎖模力	Clamping Force	Tons	2000								
鎖模行程	Opening Stroke	mm	2800								
模板最大開距	Max Daylight Opening	mm	3600								
容模厚度(小機: 最小模厚)	Mould Height (Min-Max)	mm	800-1700								
四柱內距(水平x垂直)	Space Between Tie-bars	mm	1850x1650								
模板尺寸(水平x垂直)	Platen Dimension (WxH)	mm	2650x2450								
模具定位孔直徑	Mould Locator Diameter	mm	Φ250H8								
頂針力	Ejector Force	ton	38.9								
頂針行程	Ejector Stroke	mm	450								
系統壓力	System Pressure	kg/cm ²	175/280								
油泵電機功率	Electric Motor Power	kW	55+55+55			55+55+55+55			55+55+55+55+55		
電熱功率	Heating Power	kW	81	94	107	101	117	133	131	149	158
溫度控制區	Temperature Control Zones	區段	6+1	7+1	8+1	6+1	7+1	8+1	6+1	7+1	8+1
總用電量	Gross Power Consumption	kW	246	259	272	321	337	353	406	424	433
電源需求	Electricity Required	A	436	456	476	571	596	620	721	749	762
油箱容積	Oil Tank Capacity	L	3900								
機器重量	Machine Weight	Tons	103			109			115		
外形尺寸(LxWxH)	Machine Dimension (LxWxH)	mxmxm	13.56x4.45x3.44			14.15x4.45x3.46			15.3x4.45x3.77		



移動模板
Moving Platen



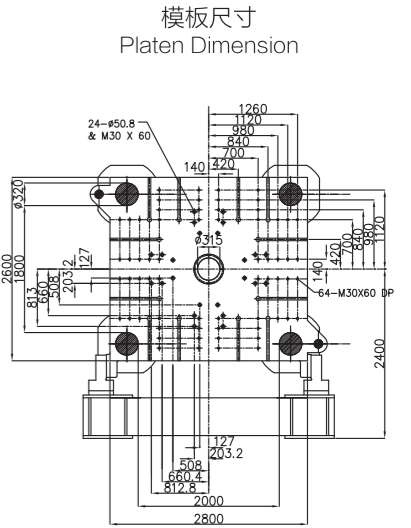
固定模板
Fixed Platen

• 本公司可以隨時修改以上技術參數而無須預先通知 / The above specifications can be altered without prior notice

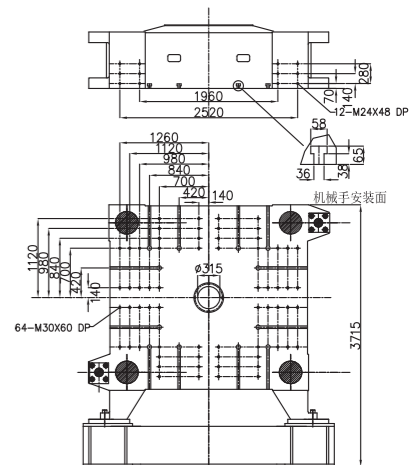
IM 2400 PLUS

Machine Specification 機器參數

項目	Items	單位/Unit	IM 2400 PLUS								
			17200			24560			32656		
射臺型號	Injection Unit		17200			24560			32656		
螺絲編號	Screw Type		A	B	C	A	B	C	A	B	C
螺絲直徑	Screw Diameter	mm	120	135	150	135	150	165	150	165	185
螺絲長徑比	Screw L:D Ratio	L:D	22.0								
注射壓力	Injection Pressure	kg/cm ²	2255	1782	1443	2281	1847	1527	2240	1851	1472
注射重量 (PS)	Shot Weight (PS)	g	7023	8888	10973	9876	12193	14755	13412	16229	20402
		oz	248	314	387	348	430	520	473	572	720
最高注射率	Injection Rate	cc / sec	1210	1531	1891	1598	1969	2383	2031	2457	3089
理論注射容積	Shot Volume	cc	7634	9661	11928	10735	13253	16036	14578	17640	22176
注射行程	Screw Stroke	mm	675			750			825		
螺絲轉速	Screw Speed	r.p.m	0-120			0-100			0-100		
射咀接觸力	Nozzle Contact Force	kN	202								
鎖模系統類別	Clamping Type		液壓鎖模/抱閘 Two Platen Hydraulic Clamp								
鎖模力	Clamping Force	Tons	2400								
鎖模行程	Opening Stroke	mm	2900								
模板最大開距	Max Daylight Opening	mm	3700								
容模厚度(小機: 最小模厚)	Mould Height (Min-Max)	mm	800-1800								
四柱內距(水平x垂直)	Space Between Tie-bars	mm	2000x1800								
模板尺寸(水平x垂直)	Platen Dimension (WxH)	mm	2800x2600								
模具定位孔直徑	Mould Locator Diameter	mm	Φ315H8								
頂針力	Ejector Force	ton	38.9								
頂針行程	Ejector Stroke	mm	450								
系統壓力	System Pressure	kg/cm ²	175/280								
油泵電機功率	Electric Motor Power	kW	55+55+55			55+55+55+55			55+55+55+55+55		
電熱功率	Heating Power	kW	81	94	107	101	117	133	131	149	158
溫度控制區	Temperature Control Zones	區段	6+1	7+1	8+1	6+1	7+1	8+1	6+1	7+1	8+1
總用電量	Gross Power Consumption	kW	246	259	272	321	337	353	406	424	433
電源需求	Electricity Required	A	436	456	476	571	596	620	721	749	762
油箱容積	Oil Tank Capacity	L	3900								
機器重量	Machine Weight	Tons	122			130			135		
外形尺寸(LxWxH)	Machine Dimension (LxWxH)	mxmxm	13.8x4.58x3.87			14.3x4.58x3.87			15.27x4.58x4.12		



移動模板
Moving Platen



固定模板
Fixed Platen

• 本公司可以隨時修改以上技術參數而無須預先通知 / The above specifications can be altered without prior notice

IM 2800 PLUS

Machine Specification 機器參數

項目	Items	單位/Unit	IM 2800 PLUS											
			24560			32656			43632					
射臺型號	Injection Unit		24560			32656			43632					
螺絲編號	Screw Type		A	B	C	A	B	C	A	B	C	A	B	C
螺絲直徑	Screw Diameter	mm	135	150	165	150	165	185	165	185	205			
螺絲長徑比	Screw L:D Ratio	L:D	22.0											
注射壓力	Injection Pressure	kg/cm ²	2281	1847	1527	2240	1851	1472	2206	1754	1429			
注射重量 (PS)	Shot Weight (PS)	g	9876	12193	14755	13412	16229	20402	18196	22875	28088			
		oz	348	430	520	473	572	720	642	807	991			
最高注射率	Injection Rate	cc / sec	1598	1969	2383	2031	2457	3089	2475	3111	3820			
理論注射容積	Shot Volume	cc	10735	13253	16036	14578	17640	22176	19778	24864	30530			
注射行程	Screw Stroke	mm	750			825			925					
螺絲轉速	Screw Speed	r.p.m				0-100								
射咀接觸力	Nozzle Contact Force	kN	202											
鎖模系統類別	Clamping Type		液壓鎖模/抱閘 Two Platen Hydraulic Clamp											
鎖模力	Clamping Force	Tons	2800											
鎖模行程	Opening Stroke	mm	3200											
模板最大開距	Max Daylight Opening	mm	4100											
容模厚度(小機: 最小模厚)	Mould Height (Min-Max)	mm	900-1900											
四柱內距(水平x垂直)	Space Between Tie-bars	mm	2100x1800											
模板尺寸(水平x垂直)	Platen Dimension (WxH)	mm	3000x2700											
模具定位孔直徑	Mould Locator Diameter	mm	Φ315H8											
頂針力	Ejector Force	ton	53.9											
頂針行程	Ejector Stroke	mm	500											
系統壓力	System Pressure	kg/cm ²	175/280											
油泵電機功率	Electric Motor Power	kW	55+55+55+55			55+55+55+55+55			55+55+55+55+55+55					
電熱功率	Heating Power	kW	101	117	133	131	149	158	150	174	198			
溫度控制區	Temperature Control Zones	區段	6+1	7+1	8+1	6+1	7+1	8+1	6+1	7+1	8+1			
總用電量	Gross Power Consumption	kW	321	337	353	406	424	433	480	504	528			
電源需求	Electricity Required	A	571	596	620	721	749	762	855	891	927			
油箱容積	Oil Tank Capacity	L	4700											
機器重量	Machine Weight	Tons	145			155			165					
外形尺寸(LxWxH)	Machine Dimension (LxWxH)	mxmxm	14.92x4.72x3.93			15.72x4.72x4.12			16.35x4.72x4.18					

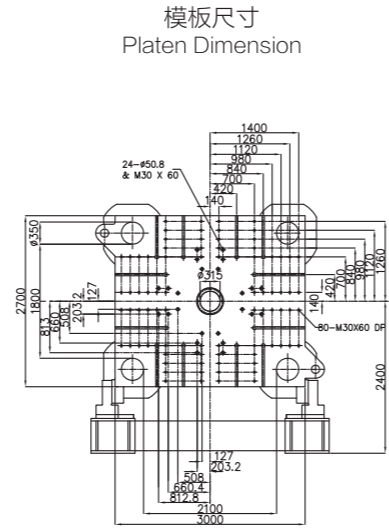
• 本公司可以隨時修改以上技術參數而無須預先通知 / The above specifications can be altered without prior notice

IM 3300 PLUS

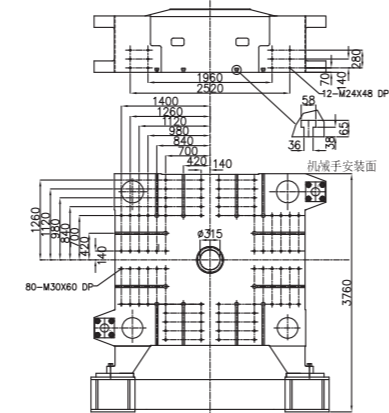
Machine Specification 機器參數

項目	Items	單位/Unit	IM 3300 PLUS											
			32656			43632			59874					
射臺型號	Injection Unit		32656			43632			59874					
螺絲編號	Screw Type		A	B	C	A	B	C	A	B	C	A	B	C
螺絲直徑	Screw Diameter	mm	150	165	185	165	185	205	185	205	225			
螺絲長徑比	Screw L:D Ratio	L:D	22.0											
注射壓力	Injection Pressure	kg/cm ²	2240	1851	1472	2206	1754	1429	2173	1769	1469			
注射重量 (PS)	Shot Weight (PS)	g	13412	16229	20402	18196	22875	28088	25348	31124	37494			
		oz	473	572	720	642	807	991	894	1098	1323			
最高注射率	Injection Rate	cc / sec	2031	2457	3089	2475	3111	3820	2931	3599	4335			
理論注射容積	Shot Volume	cc	14578	17640	22176	19778	24864	30530	27552	33831	40754			
注射行程	Screw Stroke	mm	825			925			1025					
螺絲轉速	Screw Speed	r.p.m	0-100			0-100			0-70					
射咀接觸力	Nozzle Contact Force	kN	202											
鎖模系統類別	Clamping Type		液壓鎖模/抱閘 Two Platen Hydraulic Clamp											
鎖模力	Clamping Force	Tons	3300											
鎖模行程	Opening Stroke	mm	3200											
模板最大開距	Max Daylight Opening	mm	4200											
容模厚度(小機: 最小模厚)	Mould Height (Min-Max)	mm	1000-2000											
四柱內距(水平x垂直)	Space Between Tie-bars	mm	2200x1900											
模板尺寸(水平x垂直)	Platen Dimension (WxH)	mm	3200x2900											
模具定位孔直徑	Mould Locator Diameter	mm	Φ315H8											
頂針力	Ejector Force	ton	539											
頂針行程	Ejector Stroke	mm	550											
系統壓力	System Pressure	kg/cm ²	175/280											
油泵電機功率	Electric Motor Power	kW	55+55+55+55+55			55+55+55+55+55+55			55+55+55+55+55+55+55					
電熱功率	Heating Power	kW	131	149	158	150	174	198	186	216	246			
溫度控制區	Temperature Control Zones	區段	6+1	7+1	8+1	6+1	7+1	8+1	6+1	7+1	8+1			
總用電量	Gross Power Consumption	kW	406	424	433	480	504	528	571	601	631			
電源需求	Electricity Required	A	721	749	762	855	891	927	1014	1059	1105			
油箱容積	Oil Tank Capacity	L	5500											
機器重量	Machine Weight	Tons	180			190			200					
外形尺寸(LxWxH)	Machine Dimension (LxWxH)	mxmxm	16.32x5.02x4.17			16.93x5.02x4.23			18.00x5.02x4.23					

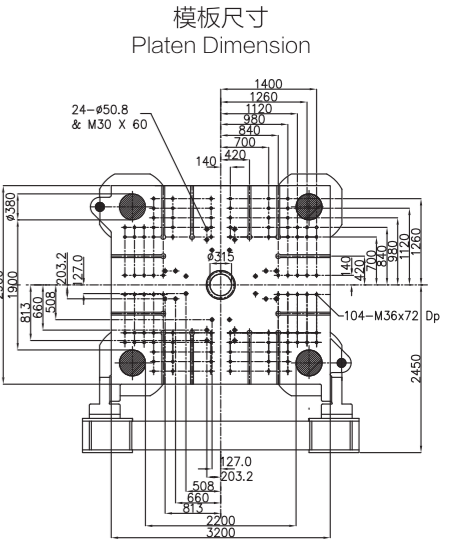
• 本公司可以隨時修改以上技術參數而無須預先通知 / The above specifications can be altered without prior notice



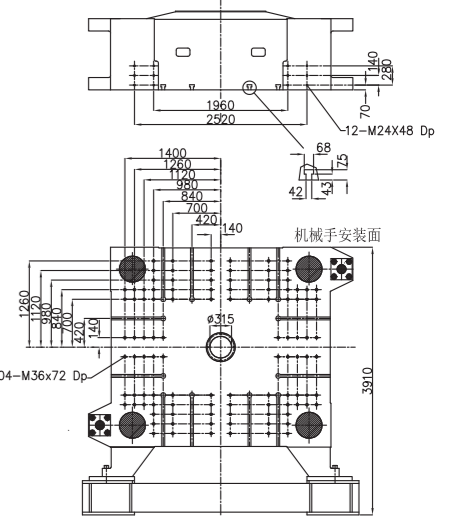
移動模板
Moving Platen



固定模板
Fixed Platen



移動模板
Moving Platen



固定模板
Fixed Platen

I-MACH PLUS

鎖模部份 / Clamping Unit

標準裝置

- 兩板鎖模結構，每條哥林柱帶有鎖模油缸，可確保鎖模力
- 高抗拉表面鍍硬鉻哥林柱
- 模板滿足“EUROMAP 2”或者按照客戶指定的標準例如JIS,SPI等
- 多點頂針滿足“EUROMAP 2”或者按照客戶指定的標準例如JIS,SPI等
- 機械手安裝接口滿足“EUROMAP 18”或者按照客戶提出的其他要求
- 機械手控制接口滿足“EUROMAP 67”或者按照客戶提出的其他要求
- 動模抽芯1組，電器控制接口滿足"EUROMAP 13"，如果客戶沒有特殊指定
- 定模抽芯1組，電器控制接口滿足"EUROMAP 13"，如果客戶沒有特殊指定
- 動模吹風1組
- 定模吹風1組
- 定模4組模溫冷卻水流量計，可以在鎖模單元防護門外側連接
- 動模4組模溫冷卻水流量計，可以在鎖模單元防護門外側連接
- 在出現警報和停機時停止模溫冷卻工作
- 移動模板下裝直線導軌確保模板平行運行
- 符合EN201裝備電子監控安全閥
- 鎖模單元防護滿足歐洲機械指令標準
- 針對I-MACH800以上機型模區綫面鋪設安全地毯
- 電氣驅動自動安全門

可選裝置

- T型槽模板。
- 移動模板抽芯最多可達6組
- 固定模板抽芯最多可達6組
- 移動模板吹風最多可達6組
- 固定模板吹風最多可達6組
- 加大的開模行程，調模行程和頂針行程
- 可附加多組模溫冷卻水流量計

Standard Features

- Two platen locking unit with an engageable locking cylinder on each tie bar guaranteeing uniform distribution of the locking force, mould traverse movements achieved by two diagonally opposed, long stroke cylinders
- High tensile alloy steel tie bars, chrome plated
- Platens prepared to “EUROMAP 2” , or any other customer specified standard such as JIS, SPI, etc
- Multiple ejection points as “EUROMAP 2” , or any other customer specified standard such as JIS, SPI, etc
- Robot mounting interface as “EUROMAP 18” , or any other customer specified requirement
- Robot control interface as “EUROMAP 67” , or any other customer specified requirement
- One channel of core pulling with hydraulic and electrical connections on the moving platen, electrically as “EUROMAP 13” , unless otherwise customer specified
- One channel of core pulling with hydraulic and electrical connections on the fixed platen, electrically as “EUROMAP 13” , unless otherwise customer specified
- One channel of air blast with connection on the moving platen
- One channel of air blast with connection on the fixed platen
- Mould cooling water flow meter, four channel, with outlets on fixed platen, access from outside the locking unit guards
- Mould cooling water flow meter, four channel, with outlets on moving platen, access from outside the locking unit guards
- Isolation of mould cooling water if any alarm set to stop the machine
- Extender linear bearings under moving platen to ensure the platens remain parallel to each other
- Electrically monitored safety valve in locking unit hydraulic system as, En201
- Guarding of the locking unit as the “EUROPEAN MACHINE DIRECTIVE”
- Pressure sensitive safety mat below the mould space, I-MACH 800 and above
- Electrically driven operator’ s safety gate

Optional Features

- Tee slotted platens in lieu of tapped hole type
- Additional channels of core pulling with hydraulic and electrical connections on moving platen, 6 channels maximum
- Additional channels of core pulling with hydraulic and electrical connections on fixed platen, 6 channels maximum
- Additional channels of air blast with connections on moving platen, 6 channels maximum
- Additional channels of air blast with connections on fixed platen, 6 channels maximum
- Extended open stroke, daylight, mould height and ejector stroke
- Additional channels in mould cooling water flow meter

注射部份 / Injection Unit

標準裝置

- 開放式球面射嘴
- 三款不同的注射單元可選
- 每款注射單元有三款螺桿備選
- 所有溶膠螺桿長徑比 22:1
- 氮化炮筒和鍍硬鉻螺桿組件
- 通用不混色螺桿，螺桿三小件也不混色
- 雲母發熱圈
- 雙射移油缸
- 不銹鋼料鬥
- 落料口溫度控制
- 帶孔的不銹鋼炮筒護罩
- 螺桿採用低速大扭矩液壓馬達驅動
- 射出單元採用綫性導軌
- 液壓操作射臺轉出功能，拆卸炮筒和射嘴更輕鬆
- 滑動射嘴安全罩，實現電器互鎖

可選裝置

- TSN型針形彈簧關閉射嘴
- Hp型針形液壓關閉射嘴
- BHP型氣動關閉射嘴
- A型雙合金炮筒和螺桿組件：適于啤制含有30-50%玻璃纖維的材料
- A型雙合金炮筒和螺桿組件：適于啤制含有15-30%玻璃纖維的材料
- A型雙合金炮筒和螺桿組件：適于啤制含有5-15%玻璃纖維的材料
- 鍍硬鉻氮化螺桿，氮化料筒
- 機器主要用于生產UPVC
- 陶瓷發熱圈取代標準的雲母加熱圈
- 加強扭矩的液壓馬達

Standard Features

- Open nozzle, spherical seating
- Customer’ s choice of any one of three sizes of injection unit per locking unit
- Customer’ s choice of any one of three screw diameters per injection unit
- All plasticizing screws of 22:1 L:D ratio
- Nitrided barrel and hard chrome plated screw assembly
- Universal screw, non-mixing, with three piece screw tip, also non-mixing
- Mica heater bands for barrel
- Balanced double carriage cylinders for deflection free connection of nozzle
- Stainless steel hopper
- Temperature controlled hopper feed throat
- Perforated stainless steel guard over heater bands
- Screw drive by low speed, high torque, hydraulic motor
- Injection unit slides by linear ball bearings
- Swiveling injection unit, hydraulically operated, for ease of access to nozzle and screw
- Sliding electrically interlocked purge guard over nozzle

Optional Features

- Needle type spring operated shut-off nozzle, type TSN
- Needle type shut-off nozzle, hydraulically operated, type HP
- Cross bolt type shut-off nozzle, pneumatically operated, type BHP
- Bi-metallic barrel and screw assembly type A, 30-50% glass filled materials
- Bi-metallic barrel and screw assembly type A, 15-30% glass filled materials
- Bi-metallic barrel and screw assembly type A, 5-15% glass filled materials
- Nitrided and chromium plated screw & barrel
- Machine prepared for processing UPVC
- Ceramic heater bands in lieu of standard mica type
- Increased torque screw drive motor

液壓系統 / Hydraulic System

標準裝置

- 液壓油預熱功能
- 伺服馬達驅動液壓系統，帶有流量和壓力閉環功能
- 3微米的旁路過濾器，可連續操作
- 液壓油溫控制功能
- 殼型或是管型的冷卻器
- 密封液壓油箱帶有呼吸功能的注油口
- 液位表及油位低警報功能
- 德國或是日本的液壓元件
- 比例被壓控制功能

可選裝置

- 頂針行程比例閥控制

控制及其他 / Controls and Electrics

- 主斷路器保護整個機器和所有連接的設備
- 所有控制系統元件裝在射膠機架下面的電器櫃中
- 電箱采用軸流風扇強制換氣
- 所有電器元件滿足 CE 標準
- “KEBA” 2000系列控制器
- 鎖模5段能控制，低壓保護功能
- 高壓鎖模力屏幕顯示功能
- 座進2段控制
- 射膠6段行程獨立控制
- 保壓6段時間獨立控制
- 溶膠5段螺杆速度及背壓設置和顯示功能
- 溶膠前/後鬆退設置及顯示功能
- 座臺後退2段設置和顯示功能
- 開模5段設置及顯示功能
- 頂出3段設置和顯示功能
- 可以在屏幕上顯示頂針回退的動作
- 可選擇的頂針模式：停留；單次或多次；震動
- 屏幕顯示所有動作的過程時間
- 所有溫度設置和顯示功能

Standard Features

- Pre-heating of hydraulic oil
- Servo motor driven hydraulic system with closed loop control of flow and pressure
- Off line filtration system, 3 micron, continuous operation
- Temperature control of hydraulic oil
- Shell and tube type oil cooler
- Sealed hydraulic tank with filler/breather
- Oil level gauge, plus electrical oil level low alarm
- German and/or Japanese hydraulic components
- Proportional screw back pressure control

Optional Features

- Proportional valve for ejector stroke control

- One circuit breaker for machine and all connected devices
- Control system contained in sheet metal cabinets integrated into the front of the injection base
- Ventilation fans for forced draft cooling of cabinets
- All electrical components CE compliant
- “KEBA” 2000 Series controller
- On screen setting and display of mould close movement, 5 stage, with L.P. mould protection
- On screen setting and display of mould locking force
- On screen setting and display of carriage forward movement, 2 stages
- On screen setting and display of injection fill, 6 stages, stroke dependent
- On screen setting and display of injection hold, 6 stages, time dependent
- On screen setting and display of plasticizing, screw speed and back pressure, 5 stages
- On screen setting and display of melt decompression, two positions, before/after plasticizing
- On screen setting and display of carriage retract movements, 2 stages
- On screen setting and display of mould open movement, 5 stages
- On screen setting and display of ejector forward movement, 3 stages
- On screen setting and display of ejector retract movement
- On screen setting and display of ejector mode, single, or multiple strokes, full set stroke, or pulsed
- On screen setting and display of all variable process times
- On screen setting and display of all variable process temperatures

- 熱電偶故障監控顯示功能
- 屏幕顯示能耗Kw.hr/kg
- 液壓油位低監控警報功能
- 油溫過高報警功能
- 油濾清器堵塞報警
- 炮筒超溫警報功能
- 低壓監控警報功能
- 機械手故障警報顯示功能
- 在任何周期檢測運行超時時間
- 屏幕顯示警報記錄
- SPC檢測程序
- 可選擇的產量達到自動管段功能
- 半自動炮筒青料程序
- 可選擇的炮筒保溫功能
- 螺杆冷啓動保護功能
- 運行時間屏幕顯示
- 位置，時間和壓力切換保壓
- 射膠終點監測功能
- 7天24小時預熱可選
- 外部和內部模組數據存儲
- 屏幕顯示語言英語和另外一種語言可選
- PID溫度控制
- 電熱圈固態繼電器控制
- 1個單相16A插座
- 1個三相16A插座
- 1個三相32A插座

可選裝置

- 屏幕顯示最大射膠壓力
- 屏幕顯示射嘴接觸力
- KEBA “EASY NET” 遠程監控系統
- 在KEBA顯示屏上可以最大16區熱流到顯示和設置
- 射膠順序控制：最大液壓控制10段，氣動控制16段
- 溶膠輸出的繼電器觸點在溶膠期間被激活
- 履帶輸送機輸出入點
- 附加16A單相插座
- 附加16A三相插座
- 附加32A三相插座

- Screen display of thermocouple failure
- Screen display of Kw.hr/kg
- Screen display of hydraulic oil level low alarm
- Screen display of oil over temperature alarm
- Screen display of oil filter clogged alarm
- Screen display of barrel over temperature alarm
- Screen display of mould obstructed alarm
- Screen display of robot malfunction alarm
- Screen display of “time over run” on any cycle phase
- Screen display of alarm log
- SPC programme
- Quantity control programme with selectable auto shut down
- Semi-automatic barrel purging programme
- Selectable barrel standby temperature
- Cold start protection for screw rotate
- Screen display of cycles run and hours run
- Change over from injection fill to injection hold by stroke, time, or pressure
- Melt cushion control with output signal for “out of cushion” cycles
- Heating calendar, 7 days, 24 hours
- External and internal mould data storage
- Selectable screen language, English plus one other
- PID temperature control
- SSR switching of heater bands
- One single phase, 16A, socket outlet
- One three phase, 16A, socket outlet
- One three phase, 32A, socket outlet

Optional Features

- Screen display of maximum injection pressure
- Screen display of nozzle sealing force
- KEBA “EASY NET” remote monitoring system
- Hot runner temperature control with setting and display on KEBA screen, 16 zones maximum
- Sequential injection, 10 stage, with hydraulic, or pneumatic valve gates, 16 gates maximum
- Potential free relay contacts active during plasticizing
- Potential free contact for activating belt conveyor
- Additional single phase, 16A, socket outlets
- Additional three phase, 16A, socket outlets
- Additional three phase, 32A, socket outlets